

smoochy lip PILLOW PATTERN

a pattern from Emily at oh yay studio

chart for laying out 4
pattern pieces to make
LARGE size:

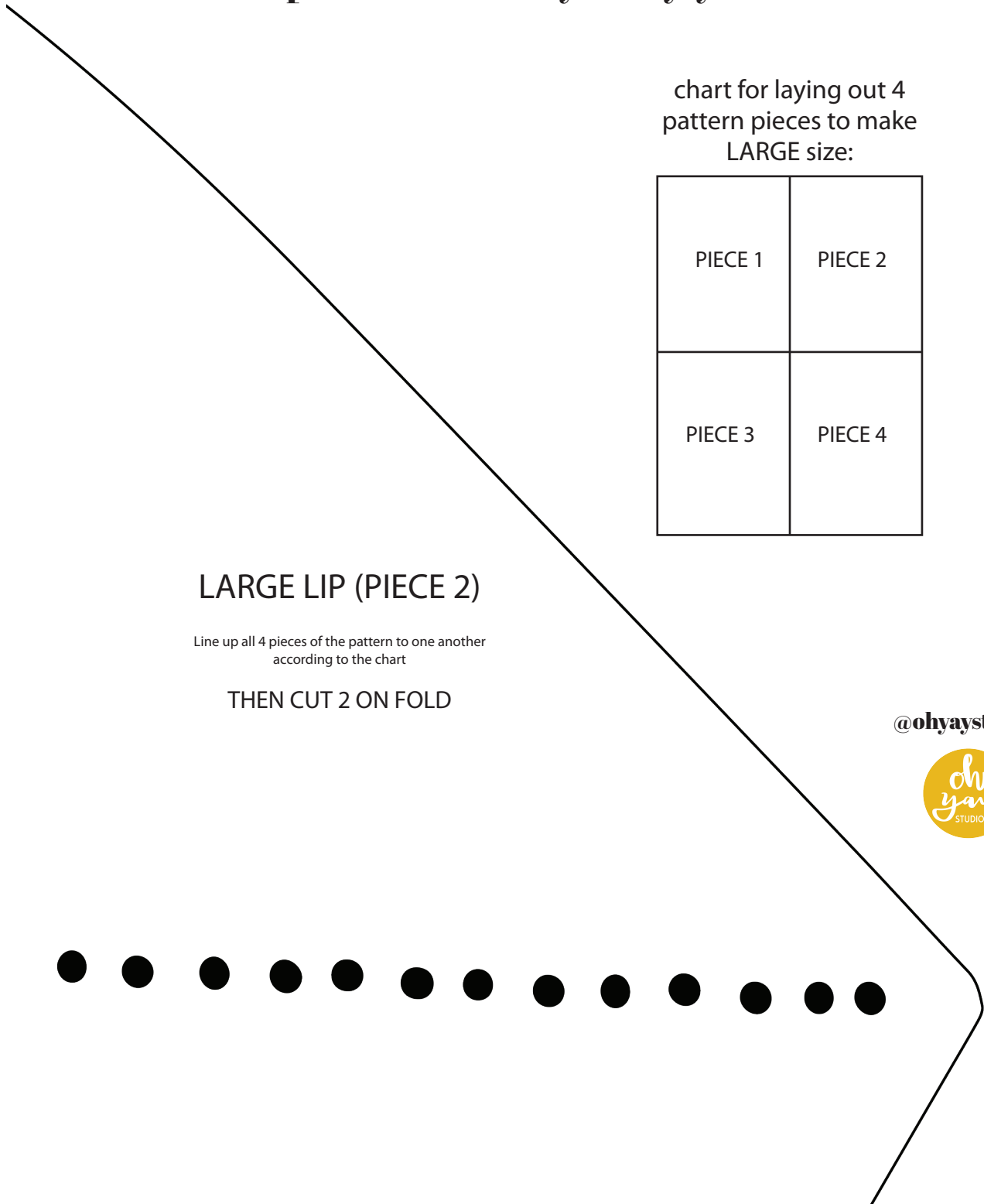
PIECE 1	PIECE 2
PIECE 3	PIECE 4

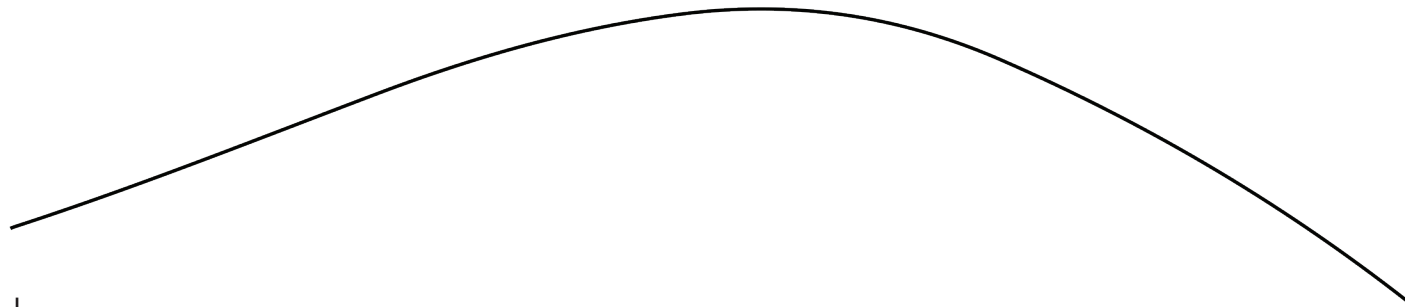
LARGE LIP (PIECE 2)

Line up all 4 pieces of the pattern to one another
according to the chart

THEN CUT 2 ON FOLD

@ohyaystudio



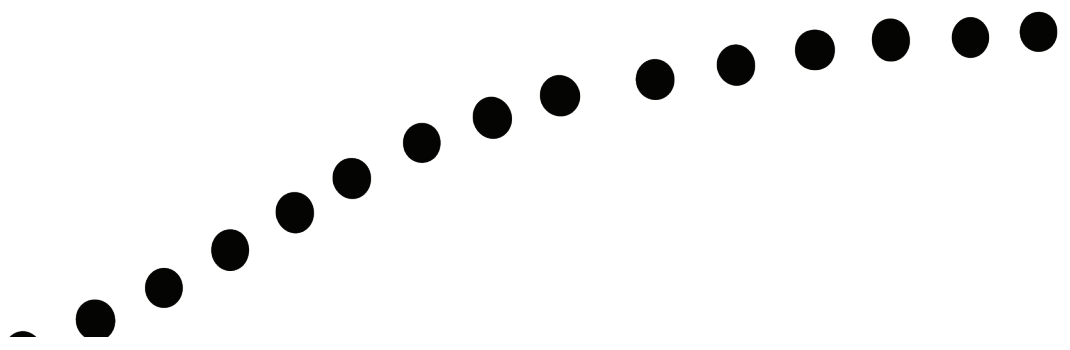


match all pieces, then cut along the fold HERE

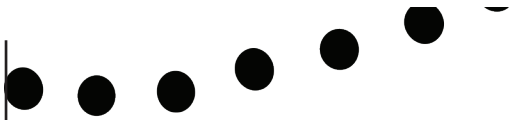
LARGE LIP (PIECE 1)

Line up all 4 pieces of the pattern to one another according to the chart

THEN CUT 2 ON FOLD



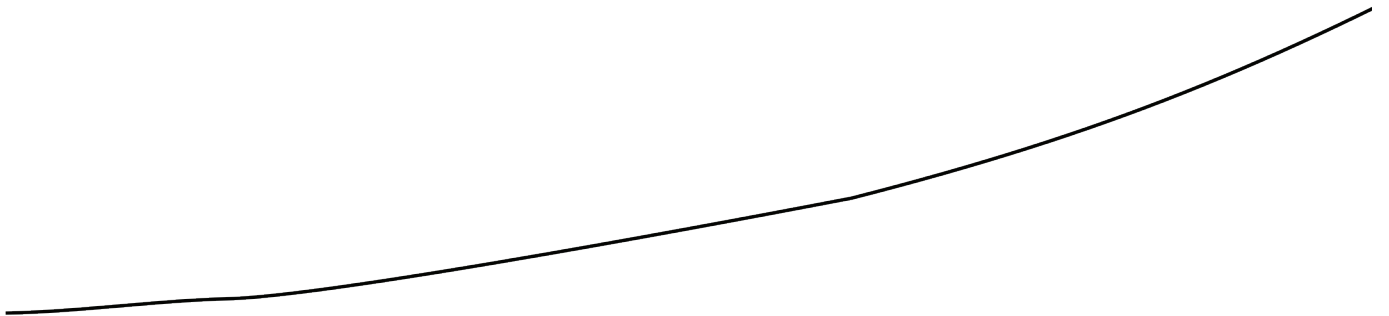
match all pieces, then cut along the fold HERE



LARGE LIP (PIECE 3)

Line up all 4 pieces of the pattern to one another
according to the chart

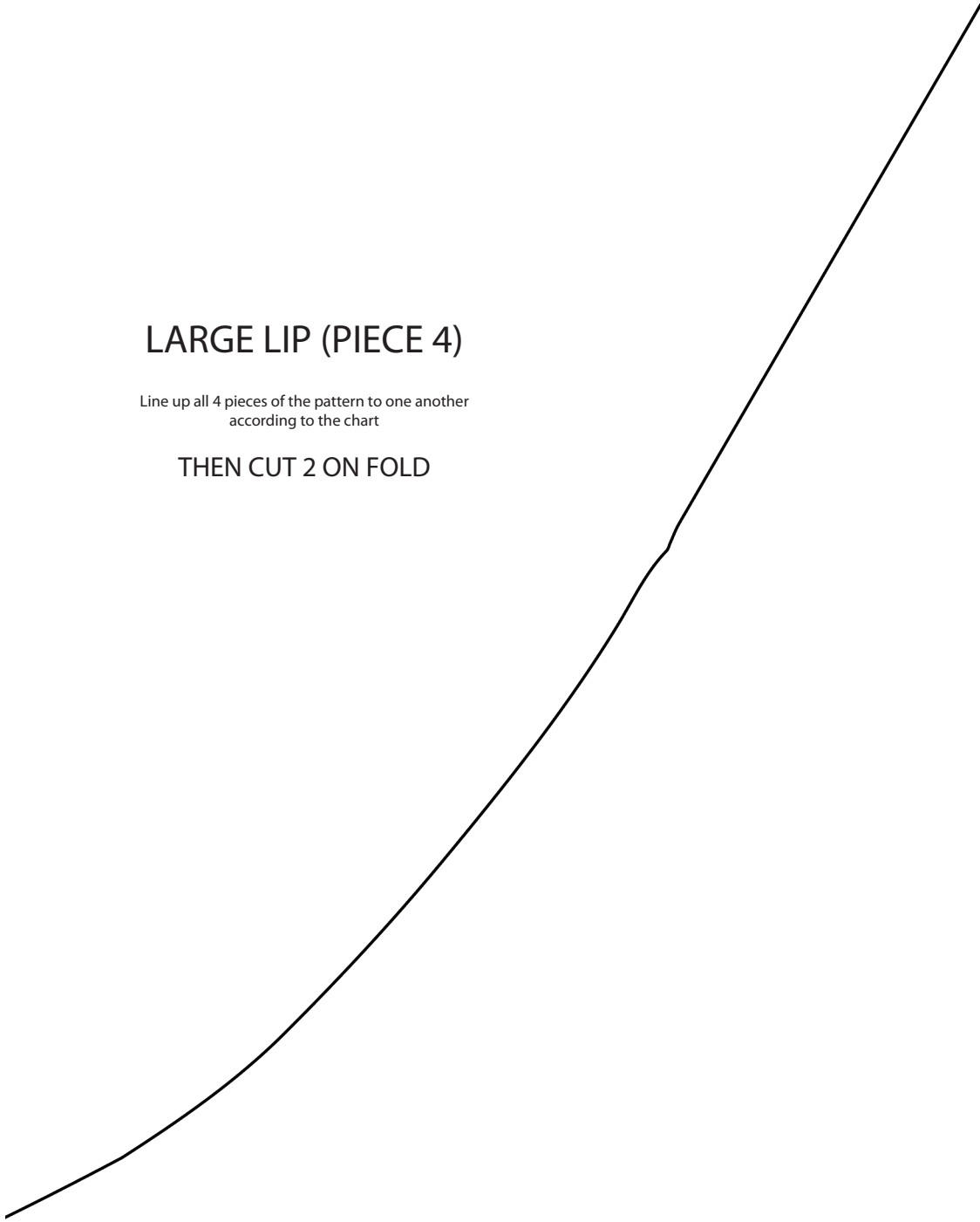
THEN CUT 2 ON FOLD



LARGE LIP (PIECE 4)

Line up all 4 pieces of the pattern to one another
according to the chart

THEN CUT 2 ON FOLD



FULL PATTERN with details
and instructions are on the oh
yay studio blog

@ohyaystudio



cut 2 along fold here

SMALL LIP

CUT 2 right sides together, on fold

